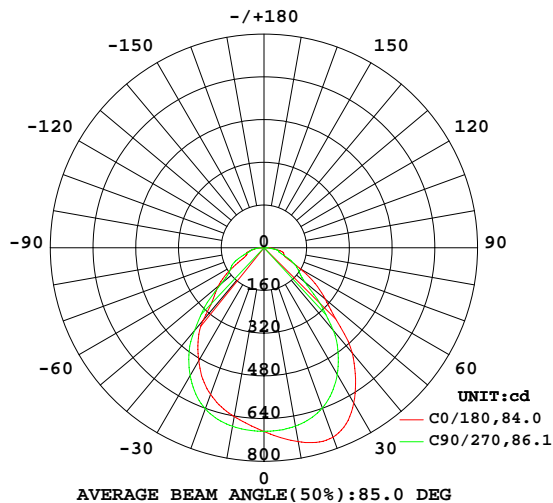


LUMINAIRE PHOTOMETRIC TEST REPORT

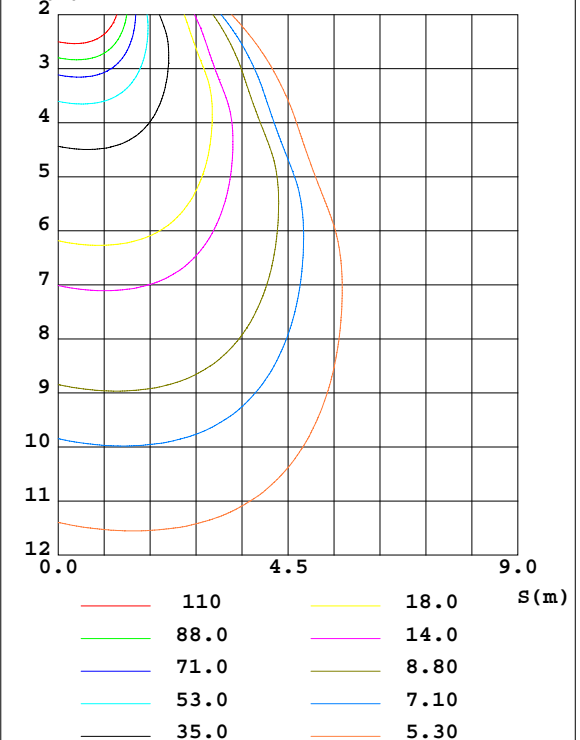
Test:U:229.79V I:0.1294A P:28.243W PF:0.9496 Freq:49.99Hz Lamp Flux:1457.39x1 lm		
NAME:	TYPE:	WEIGHT:
SPEC.:	DIM.: 600*203*10	SERIAL No.:
MFR.:	SUR.:0.58*0.122	Shielding Angle:

DATA OF LAMP		PHOTOMETRIC DATA Eff: 51.60 lm/W			
MODEL		Imax(cd)	757.7	S/MH(C0/180)	1.09
NOMINAL POWER(W)	30	LOR(%)	100.0	S/MH(C90/270)	1.20
RATED VOLTAGE(V)	230.0	TOTAL FLUX(lm)	1457.4	η UP,DN(C0-180)	0.0,53.5
NOMINAL FLUX(lm)	1457.39	CIE CLASS	DIRECT	η UP,DN(C180-360)	0.0,46.5
LAMPS INSIDE	1	η up(%)	0.0	CIBSE SHR NOM	1.25
TEST VOLTAGE(V)	230.0	η down(%)	100.0	CIBSE SHR MAX	1.25

LUMINOUS INTENSITY DISTRIBUTION DIAGRAM



C0 PLANE ISOLUX DIAGRAM (UNIT:lx)



C Range: 0 - 360DEG
C Interval: 90.0DEG
Test Speed: HIGH
Temperature:25.3DEG
Operators:
Test Date:2026-01-17

γ Range: 0 - 90DEG
 γ Interval: 1.0DEG
Test System:EVERFINE GO-2000A_V1 SYSTEM V2.0.406.10
Humidity:65.0%
Test Distance:11.700m [K=1.0000]
Remarks:

ZONAL FLUX DIAGRAM

ZONAL FLUX DIAGRAM:

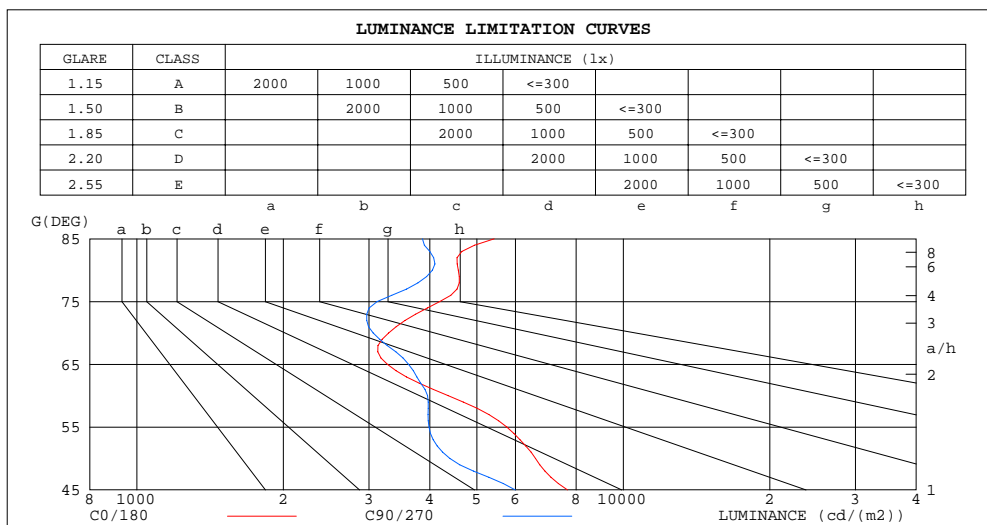
γ	C0	C90	C180	C270					γ	Φ zone	Φ total	$\%lum, lamp$
10	737.1	678.2	642.0	678.9					0- 10	65.51	65.51	4.49,4.49
20	755.4	638.9	584.8	642.4					10- 20	190.5	256.0	17.6,17.6
30	672.4	548.9	488.8	553.3					20- 30	283.8	539.8	37,37
40	513.9	404.4	355.9	405.2					30- 40	311.5	851.3	58.4,58.4
50	300.1	200.1	224.2	206.9					40- 50	245.5	1097	75.3,75.3
60	154.4	140.1	113.1	141.1					50- 60	163.0	1260	86.4,86.4
70	79.71	74.04	68.43	82.26					60- 70	101.2	1361	93.4,93.4
80	56.28	49.75	41.99	47.67					70- 80	66.84	1428	98,98
90	10.30	4.364	1.435	6.091					80- 90	29.66	1457	100,100
100									90-100			
110									100-110			
120									110-120			
130									120-130			
140									130-140			
150									140-150			
160									150-160			
170									160-170			
180									170-180			
DEG	LUMINOUS INTENSITY:cd									UNIT:lm		

C Range: 0 - 360DEG
 C Interval: 90.0DEG
 Test Speed: HIGH
 Temperature:25.3DEG
 Operators:
 Test Date:2026-01-17

γ Range: 0 - 90DEG
 γ Interval: 1.0DEG
 Test System:EVERFINE GO-2000A_V1 SYSTEM V2.0.406.10
 Humidity:65.0%
 Test Distance:11.700m [K=1.0000]
 Remarks:

LUMINANCE LIMITATION CURVES

Test:U:229.79V I:0.1294A P:28.243W PF:0.9496 Freq:49.99Hz Lamp Flux:1457.39x1 lm		
NAME:	TYPE:	WEIGHT:
SPEC.:	DIM.: 600*203*10	SERIAL No.:
MFR.:	SUR.:0.58*0.122	Shielding Angle:



LUMINANCE cd/(m2)		
G(DEG)	C0/180	C90/270
85	5428	3863
80	4580	4049
75	4194	3118
70	3293	3060
65	3272	3617
60	4365	3958
55	5762	3986
50	6597	4399
45	7677	5999

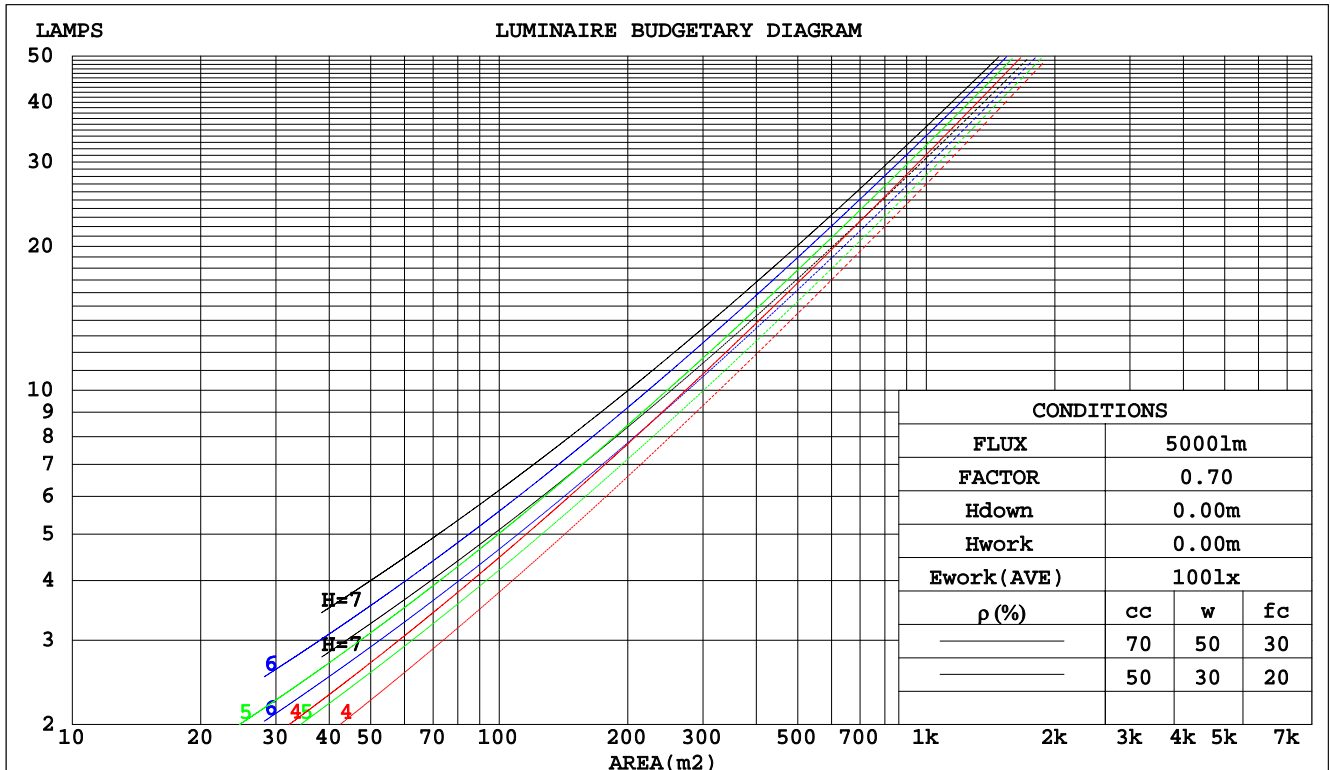
C Range: 0 - 360DEG
C Interval: 90.0DEG
Test Speed: HIGH
Temperature:25.3DEG
Operators:
Test Date:2026-01-17

γ Range: 0 - 90DEG
 γ Interval: 1.0DEG
Test System:EVERFINE GO-2000A_V1 SYSTEM V2.0.406.10
Humidity:65.0%
Test Distance:11.700m [K=1.0000]
Remarks:

CU AND LUMINAIRE BUDGETARY ESTIMATE DIAGRAM

Test:U:229.79V I:0.1294A P:28.243W PF:0.9496 Freq:49.99Hz Lamp Flux:1457.39x1 lm		
NAME:	TYPE:	WEIGHT:
SPEC.:	DIM.: 600*203*10	SERIAL No.:
MFR.:	SUR.:0.58*0.122	Shielding Angle:

pcc	80%			70%			50%			30%			10%			0
pw	50%	30%	10%	50%	30%	10%	50%	30%	10%	50%	30%	10%	50%	30%	10%	0
pfc	20%			20%			20%			20%			20%			0
RCR	RCR:Room Cavity Ratio			Coefficients of Utilization(CU)												
0.0	1.19	1.19	1.19	1.16	1.16	1.16	1.11	1.11	1.11	1.06	1.06	1.06	1.02	1.02	1.02	1.00
1.0	1.06	1.02	.98	1.03	.00	.97	.99	.96	.94	.95	.93	.91	.92	.90	.88	.86
2.0	.94	.88	.83	.92	.87	.82	.89	.84	.80	.86	.82	.78	.83	.79	.77	.74
3.0	.84	.77	.71	.83	.76	.70	.80	.74	.69	.77	.72	.68	.75	.70	.67	.65
4.0	.76	.68	.62	.74	.67	.61	.72	.66	.61	.70	.64	.60	.68	.63	.59	.57
5.0	.69	.60	.54	.68	.60	.54	.66	.59	.54	.64	.58	.53	.62	.57	.53	.51
6.0	.63	.54	.48	.62	.54	.48	.60	.53	.48	.58	.52	.47	.57	.51	.47	.45
7.0	.57	.49	.44	.56	.49	.43	.55	.48	.43	.54	.47	.43	.52	.47	.43	.41
8.0	.53	.45	.39	.52	.44	.39	.51	.44	.39	.50	.43	.39	.48	.43	.39	.37
9.0	.49	.41	.36	.48	.41	.36	.47	.40	.36	.46	.40	.35	.45	.39	.35	.34
10.0	.45	.38	.33	.45	.38	.33	.44	.37	.33	.43	.37	.32	.42	.36	.32	.31



C Range: 0 - 360DEG
C Interval: 90.0DEG
Test Speed: HIGH
Temperature:25.3DEG
Operators:
Test Date:2026-01-17

γ Range: 0 - 90DEG
γ Interval: 1.0DEG
Test System:EVERFINE GO-2000A_V1 SYSTEM V2.0.406.10
Humidity:65.0%
Test Distance:11.700m [K=1.0000]
Remarks:

WEC AND CCEC

Test:U:229.79V I:0.1294A P:28.243W PF:0.9496 Freq:49.99Hz Lamp Flux:1457.39x1 lm								
NAME:			TYPE:			WEIGHT:		
SPEC.:			DIM.: 600*203*10			SERIAL No.:		
MFR.:			SUR.:0.58*0.122			Shielding Angle:		

pcc	80%			70%			50%			30%			10%			0
pw	50%	30%	10%	50%	30%	10%	50%	30%	10%	50%	30%	10%	50%	30%	10%	0
pfc	20%			20%			20%			20%			20%			0
RCR	RCR:Room Cavity Ratio						Wall Exitance Coefficients(WEC)									
0.0																
1.0	.275	.156	.050	.268	.153	.049	.255	.146	.047	.243	.140	.045	.232	.134	.043	
2.0	.257	.141	.043	.251	.138	.043	.240	.133	.041	.229	.129	.040	.220	.124	.039	
3.0	.239	.127	.038	.234	.125	.038	.224	.121	.037	.215	.118	.036	.206	.114	.035	
4.0	.223	.116	.034	.218	.114	.034	.209	.111	.033	.201	.108	.033	.193	.105	.032	
5.0	.208	.106	.031	.203	.104	.030	.196	.102	.030	.188	.099	.030	.182	.097	.029	
6.0	.194	.097	.028	.190	.096	.028	.184	.094	.027	.177	.092	.027	.171	.090	.027	
7.0	.182	.090	.026	.179	.089	.025	.173	.087	.025	.167	.086	.025	.161	.084	.025	
8.0	.171	.084	.024	.168	.083	.023	.163	.081	.023	.158	.080	.023	.153	.078	.023	
9.0	.162	.078	.022	.159	.077	.022	.154	.076	.022	.149	.075	.021	.145	.074	.021	
10.0	.153	.073	.020	.150	.073	.020	.146	.071	.020	.142	.070	.020	.138	.069	.020	

pcc	80%			70%			50%			30%			10%			0
pw	50%	30%	10%	50%	30%	10%	50%	30%	10%	50%	30%	10%	50%	30%	10%	0
pfc	20%			20%			20%			20%			20%			0
RCR	RCR:Room Cavity Ratio						Ceiling Cavity Exitance Coefficients(CCEC)									
0.0	.190	.190	.190	.163	.163	.163	.111	.111	.111	.064	.064	.064	.020	.020	.020	
1.0	.178	.156	.137	.152	.134	.118	.104	.092	.082	.060	.053	.047	.019	.017	.015	
2.0	.168	.132	.102	.144	.114	.088	.098	.079	.062	.057	.046	.036	.018	.015	.012	
3.0	.159	.114	.079	.136	.098	.068	.093	.068	.048	.054	.040	.028	.017	.013	.009	
4.0	.150	.100	.062	.129	.087	.054	.089	.060	.038	.051	.035	.023	.017	.012	.007	
5.0	.143	.090	.051	.123	.078	.044	.084	.054	.031	.049	.032	.018	.016	.010	.006	
6.0	.136	.081	.042	.117	.070	.037	.080	.049	.026	.047	.029	.015	.015	.009	.005	
7.0	.129	.074	.035	.111	.064	.031	.077	.045	.022	.045	.027	.013	.014	.009	.004	
8.0	.123	.068	.031	.106	.059	.027	.073	.042	.019	.043	.024	.011	.014	.008	.004	
9.0	.117	.063	.027	.101	.055	.023	.070	.039	.017	.041	.023	.010	.013	.007	.003	
10.0	.112	.059	.024	.097	.051	.021	.067	.036	.015	.039	.021	.009	.013	.007	.003	

C Range: 0 - 360DEG
C Interval: 90.0DEG
Test Speed: HIGH
Temperature:25.3DEG
Operators:
Test Date:2026-01-17

γ Range: 0 - 90DEG
γ Interval: 1.0DEG
Test System:EVERFINE GO-2000A_V1 SYSTEM V2.0.406.10
Humidity:65.0%
Test Distance:11.700m [K=1.0000]
Remarks:

UGR(Unified Glare Rating) Table

Test:U:229.79V I:0.1294A P:28.243W PF:0.9496 Freq:49.99Hz Lamp Flux:1457.39x1 lm											
NAME:					TYPE:			WEIGHT:			
SPEC.:					DIM.: 600*203*10			SERIAL No.:			
MFR.:					SUR.:0.58*0.122			Shielding Angle:			
ceiling/cavity	0.7	0.7	0.5	0.5	0.3	0.7	0.7	0.5	0.5	0.3	
walls	0.5	0.3	0.5	0.3	0.3	0.5	0.3	0.5	0.3	0.3	
working plane	0.2	0.2	0.2	0.2	0.2	0.2	0.2	0.2	0.2	0.2	
Room dimensions		Viewed crosswise				Viewed endwise					
x = 2H y = 2H	2H	18.3	19.6	18.5	19.8	20.0	17.3	18.7	17.6	18.9	19.1
	3H	18.9	20.2	19.2	20.4	20.6	18.2	19.5	18.5	19.7	19.9
	4H	19.5	20.7	19.8	20.9	21.1	18.6	19.8	19.0	20.1	20.3
	6H	20.1	21.3	20.5	21.5	21.8	19.3	20.4	19.6	20.7	20.9
	8H	20.4	21.5	20.7	21.8	22.0	19.6	20.6	19.9	20.9	21.2
	12H	20.6	21.7	21.0	22.0	22.3	19.7	20.8	20.1	21.1	21.4
4H	2H	18.5	19.6	18.8	19.9	20.1	17.7	18.9	18.0	19.1	19.4
	3H	19.3	20.4	19.7	20.7	21.0	18.8	19.8	19.1	20.1	20.4
	4H	20.1	21.1	20.5	21.4	21.7	19.4	20.4	19.8	20.7	21.0
	6H	21.0	21.9	21.4	22.2	22.6	20.3	21.1	20.7	21.5	21.8
	8H	21.4	22.2	21.8	22.5	22.9	20.6	21.4	21.1	21.8	22.2
	12H	21.7	22.4	22.1	22.8	23.2	20.9	21.6	21.3	22.0	22.4
8H	4H	20.4	21.2	20.8	21.5	21.9	19.8	20.6	20.2	20.9	21.3
	6H	21.5	22.2	22.0	22.6	23.0	20.9	21.5	21.3	21.9	22.3
	8H	22.0	22.6	22.4	23.0	23.4	21.4	21.9	21.8	22.4	22.8
	12H	22.5	23.0	22.9	23.4	23.9	21.7	22.2	22.2	22.7	23.1
12H	4H	20.4	21.2	20.9	21.5	21.9	19.8	20.6	20.3	20.9	21.3
	6H	21.6	22.2	22.1	22.6	23.1	21.0	21.6	21.5	22.0	22.4
	8H	22.1	22.6	22.6	23.1	23.6	21.5	22.0	22.0	22.5	23.0
Variations with the observer position at spacings:											
S = 1.0H	+ 0.3 / - 0.3					+ 0.4 / - 0.4					
1.5H	+ 0.2 / - 0.4					+ 0.3 / - 0.5					
2.0H	+ 0.5 / - 0.5					+ 0.4 / - 0.3					

CIE Pub.117, 1457 lm Total Lamp Luminous Flux Corrected ($8\log(F/F_0) = 1.3$)

C Range: 0 - 360DEG
C Interval: 90.0DEG
Test Speed: HIGH
Temperature:25.3DEG
Operators:
Test Date:2026-01-17

γ Range: 0 - 90DEG
 γ Interval: 1.0DEG
Test System:EVERFINE GO-2000A_V1 SYSTEM V2.0.406.10
Humidity:65.0%
Test Distance:11.700m [K=1.0000]
Remarks:

UTILIZATION FACTORS TABLE

Test:U:229.79V I:0.1294A P:28.243W PF:0.9496 Freq:49.99Hz Lamp Flux:1457.39x1 lm		
NAME:	TYPE:	WEIGHT:
SPEC.:	DIM.: 600*203*10	SERIAL No.:
MFR.:	SUR.:0.58*0.122	Shielding Angle:

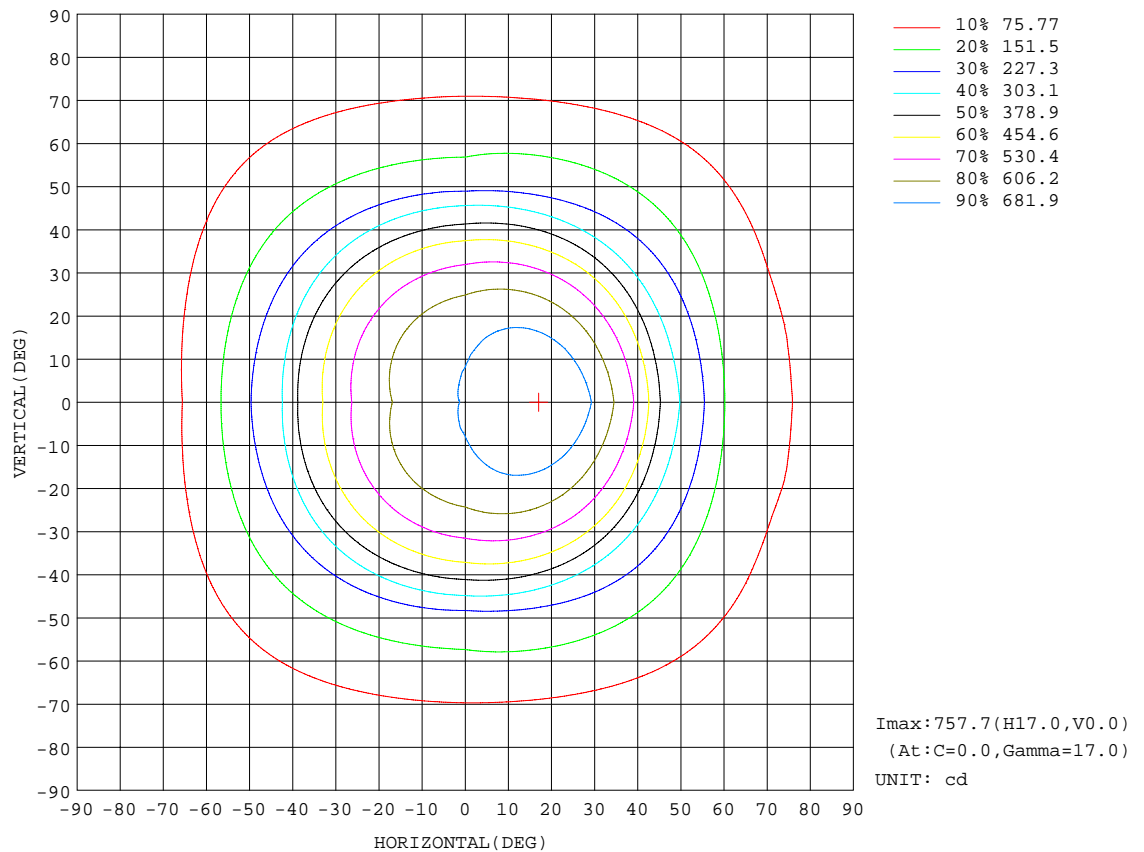
REFLECTANCE										
Ceiling	0.8	0.8	0.8	0.7	0.7	0.7	0.5	0.5	0.5	0
Walls	0.7	0.5	0.3	0.7	0.5	0.3	0.7	0.5	0.3	0
Working plane	0.2	0.2	0.2	0.2	0.2	0.2	0.2	0.2	0.2	0
ROOM INDEX	UTILIZATION FACTORS(PERCENT) $k(RI) \times RCR = 5$									
k = 0.60	66	56	49	65	55	49	64	55	49	44
0.80	75	65	59	74	65	59	73	64	58	52
1.00	83	73	67	82	73	67	80	74	66	60
1.25	89	80	74	88	80	74	85	78	73	67
1.50	94	85	79	92	84	79	89	83	78	71
2.00	99	92	86	97	91	86	94	89	84	77
2.50	102	96	91	100	94	90	97	92	88	80
3.00	105	99	94	103	98	93	99	95	91	83
4.00	108	103	99	106	102	98	102	98	95	87
5.00	110	106	103	108	104	101	104	101	98	89
ROOM INDEX	UF(total)									Direct
According to DIN EN 13032-2 2004			Suspended					SHRNOM = 1.25		

C Range: 0 - 360DEG
C Interval: 90.0DEG
Test Speed: HIGH
Temperature:25.3DEG
Operators:
Test Date:2026-01-17

γ Range: 0 - 90DEG
 γ Interval: 1.0DEG
Test System:EVERFINE GO-2000A_V1 SYSTEM V2.0.406.10
Humidity:65.0%
Test Distance:11.700m [K=1.0000]
Remarks:

ISOCANDELA DIAGRAM

Test:U:229.79V I:0.1294A P:28.243W PF:0.9496 Freq:49.99Hz Lamp Flux:1457.39x1 lm		
NAME:	TYPE:	WEIGHT:
SPEC.:	DIM.: 600*203*10	SERIAL No.:
MFR.:	SUR.:0.58*0.122	Shielding Angle:

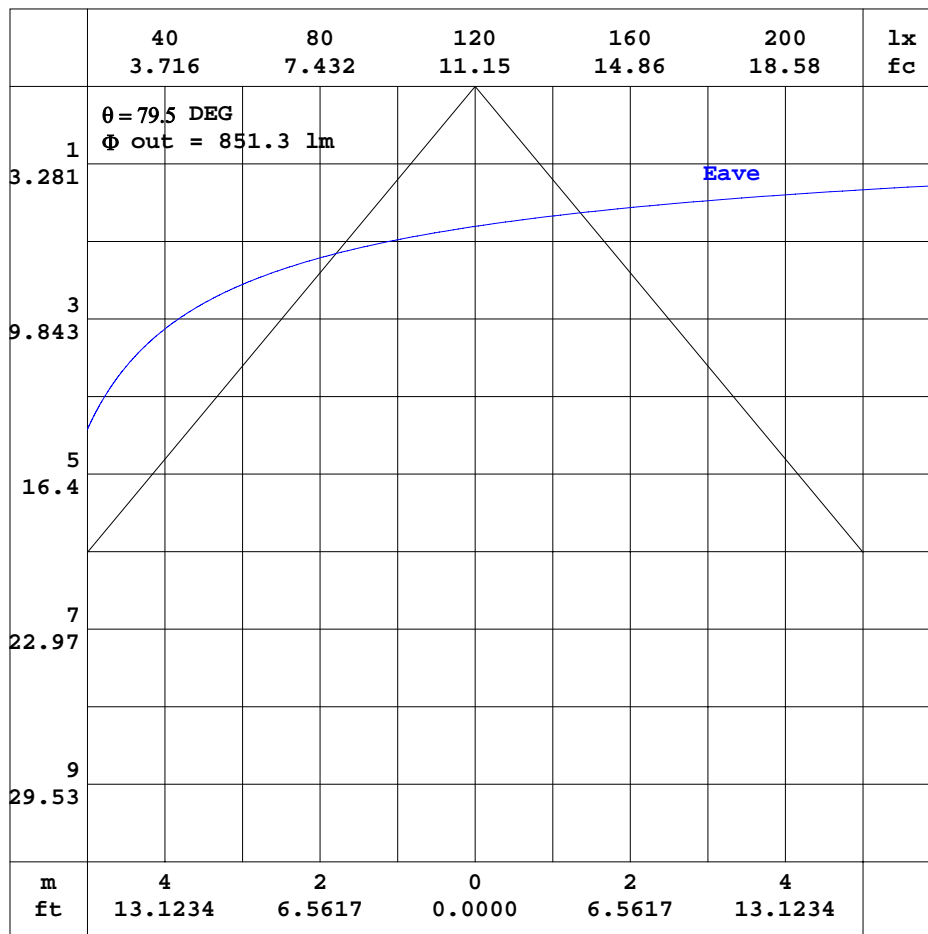


C Range: 0 - 360DEG
C Interval: 90.0DEG
Test Speed: HIGH
Temperature:25.3DEG
Operators:
Test Date:2026-01-17

γ Range: 0 - 90DEG
 γ Interval: 1.0DEG
Test System:EVERFINE GO-2000A_V1 SYSTEM V2.0.406.10
Humidity:65.0%
Test Distance:11.700m [K=1.0000]
Remarks:

AAI CURVES

Test:U:229.79V I:0.1294A P:28.243W PF:0.9496 Freq:49.99Hz Lamp Flux:1457.39x1 lm		
NAME:	TYPE:	WEIGHT:
SPEC.:	DIM.: 600*203*10	SERIAL No.:
MFR.:	SUR.:0.58*0.122	Shielding Angle:



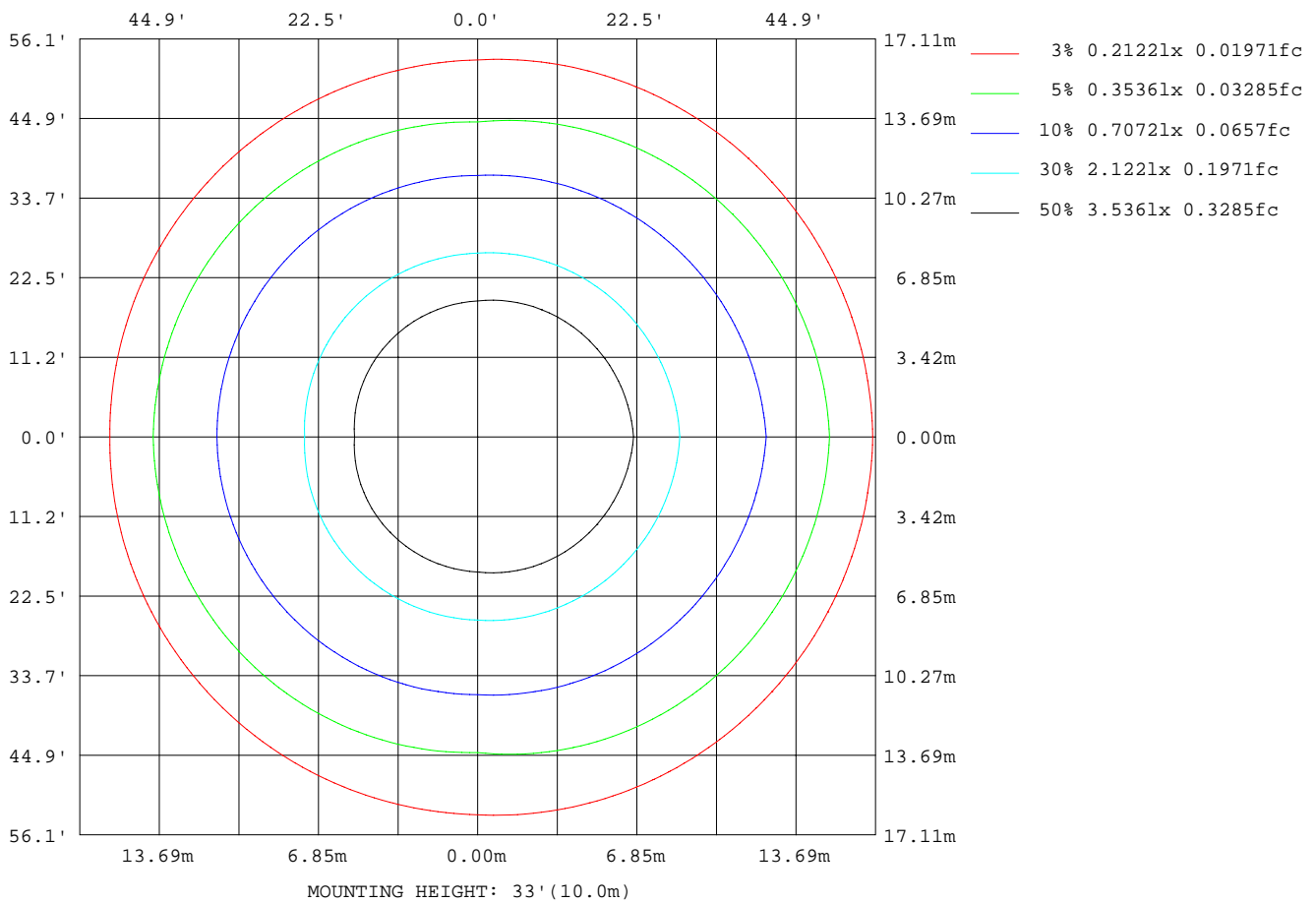
Note:The Curves indicate the illuminated area and the average illumination when the luminaire is at different distance.

C Range: 0 - 360DEG
 C Interval: 90.0DEG
 Test Speed: HIGH
 Temperature:25.3DEG
 Operators:
 Test Date:2026-01-17

γ Range: 0 - 90DEG
 γ Interval: 1.0DEG
 Test System:EVERFINE GO-2000A_V1 SYSTEM V2.0.406.10
 Humidity:65.0%
 Test Distance:11.700m [K=1.0000]
 Remarks:

ISOLUX DIAGRAM

Test:U:229.79V I:0.1294A P:28.243W PF:0.9496 Freq:49.99Hz Lamp Flux:1457.39x1 lm		
NAME:	TYPE:	WEIGHT:
SPEC.:	DIM.: 600*203*10	SERIAL No.:
MFR.:	SUR.:0.58*0.122	Shielding Angle:



C Range: 0 - 360DEG
C Interval: 90.0DEG
Test Speed: HIGH
Temperature:25.3DEG
Operators:
Test Date:2026-01-17

γ Range: 0 - 90DEG
 γ Interval: 1.0DEG
Test System:EVERFINE GO-2000A_V1 SYSTEM V2.0.406.10
Humidity:65.0%
Test Distance:11.700m [K=1.0000]
Remarks:

LED Avg.L Report

Test:U:229.79V I:0.1294A P:28.243W PF:0.9496 Freq:49.99Hz Lamp Flux:1457.39x1 lm		
NAME:	TYPE:	WEIGHT:
SPEC.:	DIM.: 600*203*10	SERIAL No.:
MFR.:	SUR.:0.58*0.122	Shielding Angle:

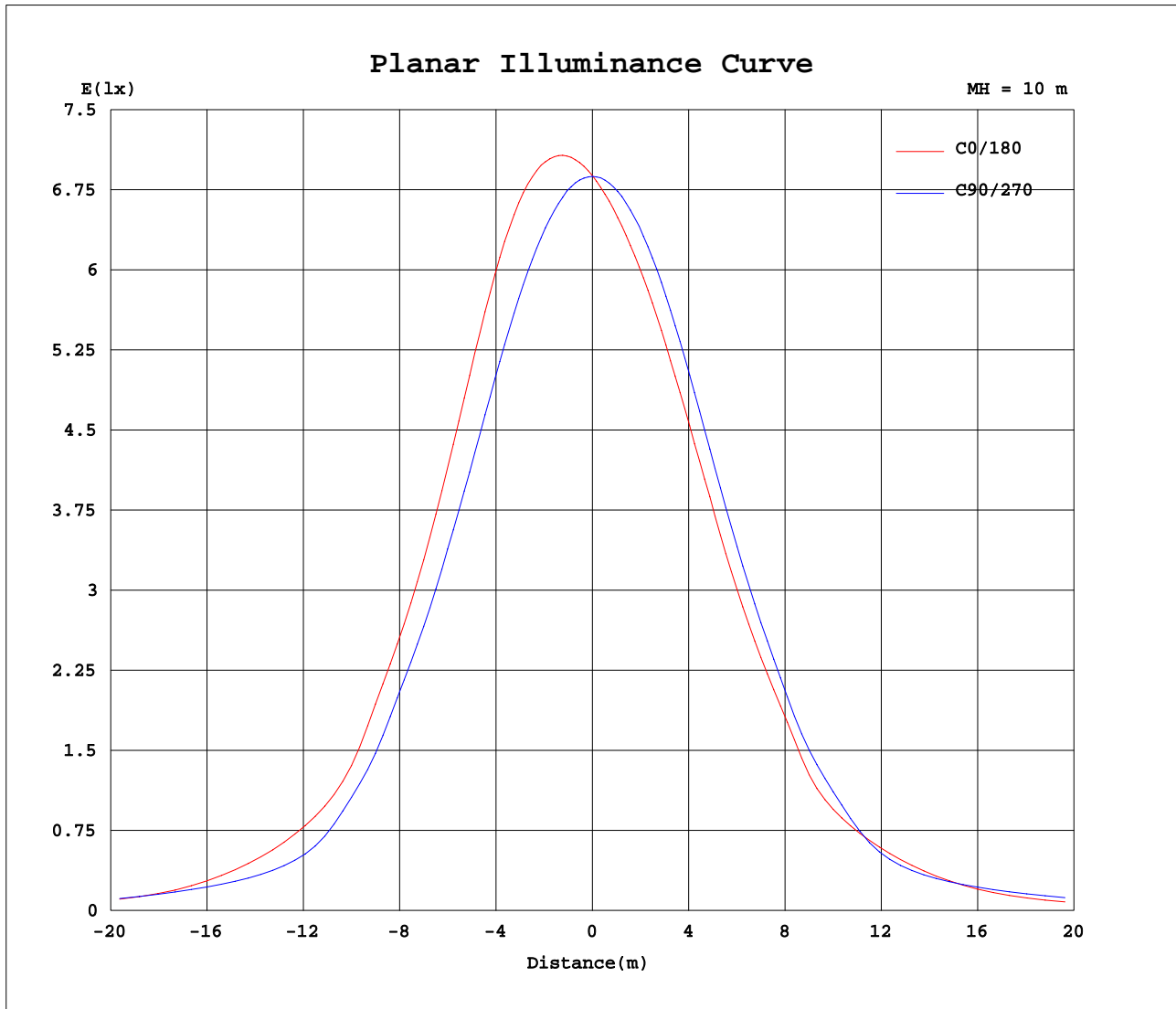
AvgL	cd/m2
L_0~180(65)av	2936
L_0~180(75)av	3834
L_0~180(85)av	4662
L_90~270(65)av	3770
L_90~270(75)av	3102
L_90~270(85)av	4174
L_45(65)av	3436
L_45(75)av	3354
L_45(85)av	4309

Standard: GB/T 29293-2012

C Range: 0 - 360DEG
C Interval: 90.0DEG
Test Speed: HIGH
Temperature:25.3DEG
Operators:
Test Date:2026-01-17

γ Range: 0 - 90DEG
γ Interval: 1.0DEG
Test System:EVERFINE GO-2000A_V1 SYSTEM V2.0.406.10
Humidity:65.0%
Test Distance:11.700m [K=1.0000]
Remarks:

Planar Illuminance Curve



C Range: 0 - 360DEG
C Interval: 90.0DEG
Test Speed: HIGH
Temperature: 25.3DEG
Operators:
Test Date: 2026-01-17

γ Range: 0 - 90DEG
 γ Interval: 1.0DEG
Test System: EVERFINE GO-2000A_V1 SYSTEM V2.0.406.10
Humidity: 65.0%
Test Distance: 11.700m [K=1.0000]
Remarks:

```

γ Range: 0 - 90DEG
γ Interval: 1.0DEG
Test System:EVERFINE GO-2000A_V1 SYSTEM V2.0.406.10
Humidity:65.0%
Test Distance:11.700m [K=1.0000]
Remarks:

```